



Land at Cwmamman Road, Glanamman

£1,200,000



Calow Evans
Estate Agents

01269 543128
www.calowevans.co.uk

Land at Cwmamman Road, Glanamman

An opportunity has arisen to purchase development land (stpp) situated in the village of Glanamman . The area is in demand for brand new properties , full planning application has been submitted for 22 two/three bedroom bungalows planning reference PL/08248. A low density site which will enjoy lovely views over the Black Mountains and not too distant from the required village amenities, riverside walks and cycle paths, shops, schools, golf course and more..

The main shopping facilities are located at Ammanford town centre. Access to the M4 motorway is via junction 49 at Pont Abraham.





Development Land:

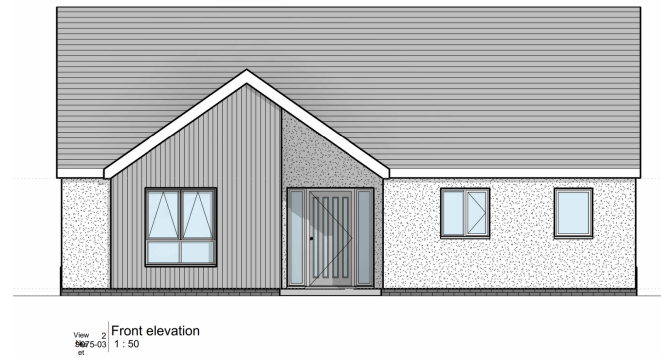
Aproximately 4.5 acres (tbc). Low density site with views over the Black Mountains.

Planning Permission:

An planning application has been submitted to Carmarthenshire Council, planning ref PL/08248 for 22 units ideally for 2/3 bedroom bungalows (stpp). We have been informed by the seller all site surveys have been administered (tbc).

Services:

TBC.



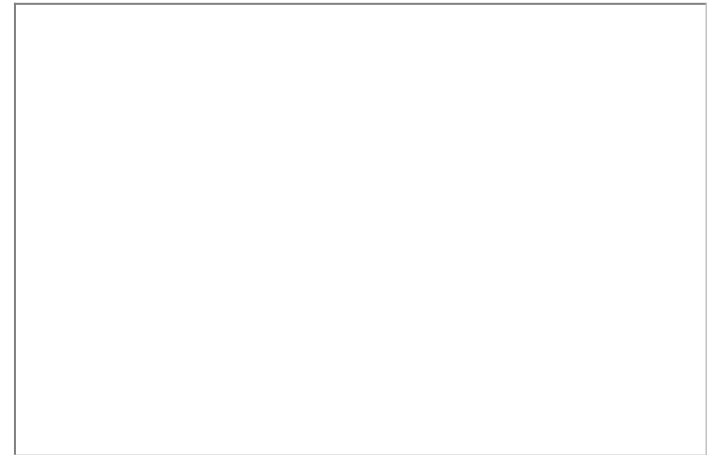
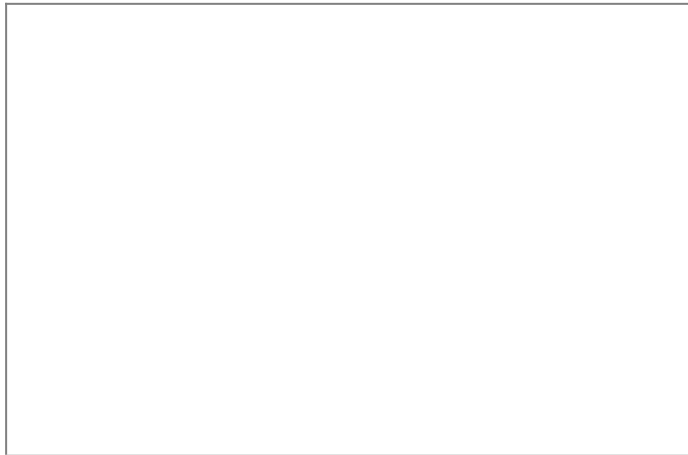


Broadband/Mobile Phone Coverage:

There is superfast broadband and mobile phone coverage in the area.

Location:

Situated in the village of Glanamman on the outskirts of Ammanford enjoying excellent leisure facilities such as riverside walks and cycle paths, recreational facilities and the neighbouring village boasts a modern primary school and an 18 hole golf course. Access to the M4 motorway would be via junction 48 at Pont Abraham.







Address

38 College Street,
Ammanford, SA18 3AF

Office Contact

01269 543 128